

## Genesis Software Interface Modules

**LAN / WAN** - Monitor the Gaming Floor, run reports and send messages with any networked computer.

**PABX Telephone Paging** - Send messages from any PABX extension

**Subsidiary Alarm Systems** - Monitors data coming from subsidiary systems and sends out messages, eg Fire Panel, Security Systems, Building Management Systems, etc.

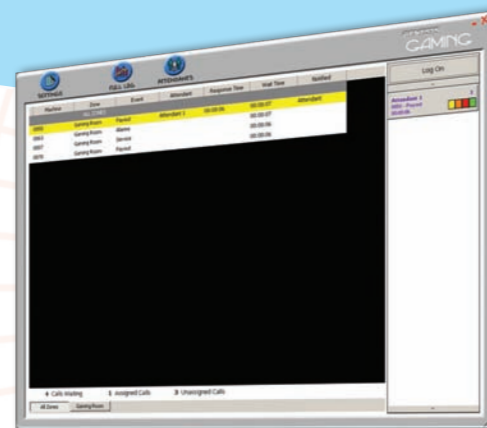
**SMS Messaging** - Send out SMS Messages from any PC, escalated gaming call or from the alarm system.

**DECT Text Messaging** - Send text messages to any DECT Cordless Handset

**BluFi Enterprise Mobility & Headset**  
Covert text messages to natural speech message and deliver through Bluetooth headset

### Interfaces to:

- eBet Gaming Systems
- Dacom
- Turbo
- Jupiters Gaming
- Computa Game
- IGS
- ATGS
- Wildcat
- Max-e-Tag
- Bounty



## Genesis Gaming Features

- Full Alphanumeric messaging to Pagers, DECT Phones, Mobile Phones and Email Addresses
- Dynamic real-time reporting and statistical information
- Fully configurable escalation paths
- Multiple gaming zone configurations
- Event colour coding for easy reference
- User restrictions and passwords
- Networkable to any authorised computer
- Alarm integration and notifications
- Simple user interface
- Touch Screen Compatible

Ph: 02 9792 4188

Fax: 02 9771 3281

[www.blufi.com.au](http://www.blufi.com.au)

22 Maclaurin Avenue, East Hills NSW 2213 - PO Box 284 Panania NSW 2213

A Division of JTech Australia Pty Ltd



# GenesisBlu Gaming

Giving you complete control of your gaming floor at your fingertips



A Division of JTech Australia Pty Ltd

**The Genesis Gaming System is the most sophisticated Gaming Paging System on the market. Extensively used in the Gaming Industry, from pubs and clubs to casinos, Australia wide and internationally.**

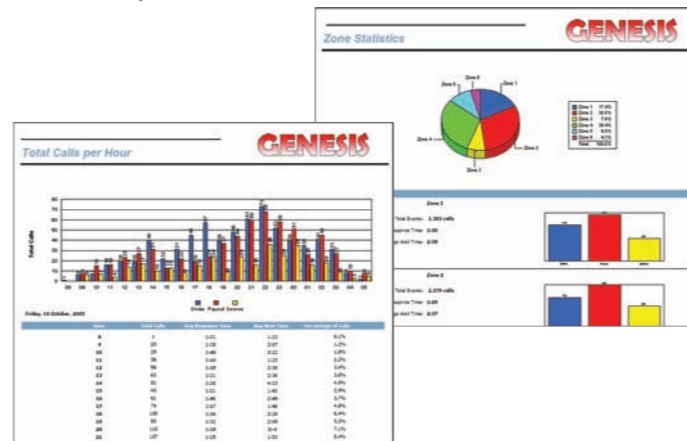
The Genesis Gaming System integrates directly with all Gaming Loyalty Systems to alert Gaming Attendants when an event arises like a payout or drink request. All events are queued to ensure the first patron to request service, is the first one attended to. Calls rotate evenly to all attendants logged on to the system. Attendants receive message via RF pagers, DECT phones, SMS to mobile phones and text to speech conversion through the BluFi / Bluetooth Enterprise Mobility Network.

**Escalations and Notifications**

With the Genesis Escalation levels, you can ensure that every call gets answered within a certain time frame. If a call is not responded to in time, there is a number of different escalation types from repeating the call, diverting the call to another attendant or backup attendant, or notifying a Duty Manager and or Gaming Manager. Managers can also be notified instantly if there are too many calls active at any one time, so they know that they need to put more staff on the floor logged on to the system.

**Real-time Reporting and Statistics**

The Genesis Reporting module allows any authorized user to generate real-time reports quickly and efficiently. These reports can be printed and exported to Excel or PDF with ease. Now you can monitor Attendants' performance, Busiest times and days, busy areas within a zone, and much more, from any PC on the network.



This will allow you to monitor productivity and efficiency as well as assist in scheduling rosters as you will know when your quiet and busy times are through the day.



Ph: 02 9792 4188

Fax: 02 9771 3281

[www.blufi.com.au](http://www.blufi.com.au)

22 Maclaurin Avenue, East Hills NSW 2213 - PO Box 284 Panania NSW 2213

# GenesisBlu Gaming



**Some Genesis Gaming Clients:**

Penrith Panthers Clubs, [Parramatta Leagues Club](#), Rooty Hill RSL Club, [Mounties](#), Balmain Tigers, [The Reef Hotel Casino](#), Wrestpoint Hotel Casino, [Across the Waves Sports Club](#), Cronulla Sharks, [Revesby Workers Club](#), Sunnybank Sports Club, [Logan City Bowls Club](#), North Sydney Leagues, [Sutherland Tradies Club](#), Harbord Diggers Club, [Launceston Country Club](#), Souths Juniors, [St George Leagues Club](#), St Marys Leagues Club, [Castle Hill RSL Club](#), Club Liverpool, [Wentworthville Leagues](#), Campbelltown Catholic Club, [Dapto Leagues Club](#), and many more....

A Division of JTech Australia Pty Ltd

